

*Ethnicraft*  
FURNITURE



collection 2021

[ethnicraft.com](http://ethnicraft.com)



*We create the foundations of your home,  
to inspire the stories of your life.*

For more than 25 years, we have been creating timeless furniture and accessories manufactured from quality materials. True to our values, we have maintained our goal to produce good design, distinguished by authenticity, simplicity and quality, as well as creativity and innovation. We rely on our unique expertise to create singular designs ready to embellish your daily life durably. We create collections for every room or space: from the furniture that defines the purpose of an area, to the objects that layer it with meaning. Nothing excites us more than seeing how people love and use our products in the story of their life.

All of our designs are intentionally timeless. They withstand trends and associate well with different styles, and they can be passed on from one home to the next, carrying over the stories of one lifetime into another.





10 LOOKBOOK

52 TABLES

- 52 dining tables
- 64 coffee tables
- 76 side tables
- 88 consoles

92 SEATING

- 92 chairs
- 97 stools
- 102 lounge chairs
- 104 benches
- 106 sofas

112 STORAGE

- 112 sideboards
- 126 cupboards
- 132 shelves
- 138 TV cupboards
- 142 chests of drawers & dressers

146 OFFICE

- 146 desks
- 151 meeting tables
- 152 drawer units

154 BEDROOM

- 154 beds
- 157 bedside tables

160 BATHROOM

166 OUTDOOR

- 166 dining
- 168 lounge





#### ICONS YOU MIGHT COME ACROSS IN OUR PRODUCT CATALOGUE

- O** OILED  
The items marked with this icon are finished with a natural oil. Visit page 173-179 for more information on how to take care of our oiled furniture.
- V** VARNISHED  
The items marked with this icon are finished with varnish. Visit page 173-179 for more information on how to take care of our varnished furniture.
- B** BRUSHED  
The items marked with this icon are brushed. This finishing gives our furniture more depth. The rougher surface highlights the grain of the wood.
- C** CONTRACT GRADE  
The items marked with this icon are EN and/or BIFMA certified.

**100 %** SOLID WOOD  
The items marked with this icon are 100% made out of solid wood.

**FSC®** FOREST STEWARDSHIP COUNCIL  
The items marked with this icon carry the FSC® 100% label. Visit page 181 for more information on the organization that promotes responsible management of the world's forests.



The mark of  
responsible forestry



The mark of  
responsible forestry

Please refer to our website for more information:  
[ethnecraft.com](http://ethnecraft.com)



## TABLES

Dining tables are all about bringing people together. We have an extensive collection of tables in many sizes and styles, suitable for all kinds of situations. Good times guaranteed.





**mikado** dining table (p.59)



**bok** dining table (p.56)





left page: **torsion** dining table (p.62), right page: **nexus** dining table (p.57)







**oblic** side table (p.78)



**stone** coffee table (p.67)



**luna** coffee table (p.70)



## SEATING

From sunrise to sunset, whatever the function, we'd gladly provide the support you need throughout the day. Our seating options consistently combine comfort and timeless design, allowing you to enjoy them for many years.





**bok** dining chair (p.92)



**baretto** bar stool (p.100)



**DC** dining chair (p.96)



DC lounge chair (p.102)



spindle bench (p.104)





N701 sofa set (p.106)



N701 sofa set (p.106)



## STORAGE

Designed with both function and character in mind, our sideboards and cupboards offer plenty of storage space and add elegance to any room. Any decorative objects you want to store and display? Our racks form an aesthetic framework for your most beloved possessions.





stairs sideboard (p.114)



shadow tv cupboard (p.140)





left page: **grooves** sideboard (p.112), right page: **studio** rack (p.132)





## OFFICE

It might be work, but it doesn't have to feel like it. Create an inspiring work environment and design your office exactly as you want it to be, without sacrificing style or comfort.

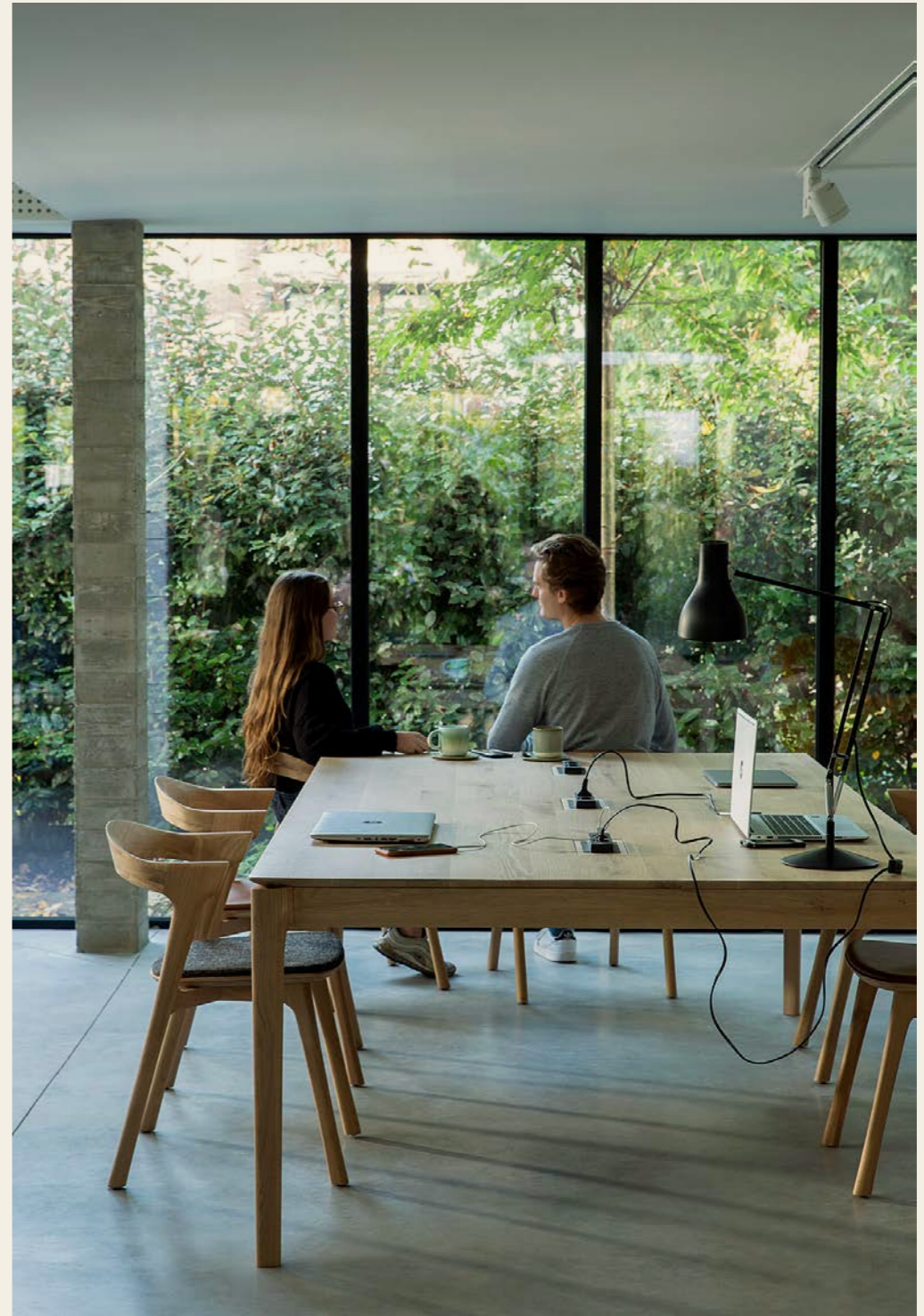




**whitebird** desk (p.148)



**meeting** table cable management



**bok** cowork desk (p.151)





oscar desk (p.147)



mikado meeting table (p.151)





## BEDROOM

Bedrooms should be calm, quiet places where you can relax after a long day at work. Our bedroom collections create the perfect setting to turn this room into a sanctuary.





**spindle** bed (p.154)



left page: **spindle** bedside table (p.157). right page: **air** bed (p.154)







## BATHROOM

Wellbeing, relaxation and a touch of natural elegance: our bathroom collections are made to last without compromising in practicality and style.





**dress**ing unit (p.164)



**layers** sink cabinet (p.160)



**qualit**ime sink cabinet (p.161), **layers** wall mirror (p. 163)





## OUTDOOR

Bring structural elegance and contemporary craftsmanship to your outdoor lifestyle. Our bestselling interior designs have been adapted specifically to be durable, stable and weather resistant, creating a seamless harmony between indoor and outdoor spaces.





**jack** outdoor lounge (p.168)



**circle** outdoor dining table (p.166), **EX 1** outdoor dining chair (p.167)



## PRODUCT OVERVIEW

For more detailed product information,  
visit our website [ethnicraft.com](http://ethnicraft.com)

Tables



BOK EXTENDABLE DINING TABLE

100% solid oak ©

- 51502 140 - 220 × 90 × 76 cm  
55" - 87" × 35" × 30"
- 51503 160 - 240 × 90 × 76 cm  
63" - 94" × 35" × 30"
- 51504 180 - 280 × 100 × 76 cm  
71" - 110" × 39" × 30"



100% solid teak

- 10150 140 - 220 × 90 × 76 cm  
55" - 87" × 35" × 30"
- 10151 160 - 240 × 90 × 76 cm  
63" - 94" × 35" × 30"
- 10152 180 - 280 × 100 × 76 cm  
71" - 110" × 39" × 30"



SLICE EXTENDABLE DINING TABLE

100% solid oak ©

- 51942 140 - 220 × 90 × 76 cm  
55" - 87" × 35" × 30"  
legs 8 × 8 cm - 3" × 3"
- 51943 160 - 240 × 90 × 76 cm  
63" - 94" × 35" × 30"  
legs 10 × 10 cm - 4" × 4"
- 50583 180 - 280 × 100 × 76 cm  
71" - 110" × 39" × 30"  
legs 10 × 10 cm - 4" × 4"



100% solid teak

- 11942 140 - 220 × 90 × 76 cm  
55" - 87" × 35" × 30"  
legs 8 × 8 cm - 3" × 3"
- 11943 160 - 240 × 90 × 76 cm  
63" - 94" × 35" × 30"  
legs 10 × 10 cm - 4" × 4"
- 11944 180 - 280 × 100 × 76 cm  
71" - 110" × 39" × 30"  
legs 10 × 10 cm - 4" × 4"







### DOUBLE EXTENDABLE DINING TABLE

100% solid oak ©

52066 200 - 300 × 100 × 76 cm  
79" - 118" × 39" × 30"



### NEW BOK ROUND EXTENDABLE DINING TABLE 100% solid oak ©

51527 129-179 × 129 × 76 cm  
51-71" × 51" × 30"



100% solid teak

12066 200 - 300 × 100 × 76 cm  
79" - 118" × 39" × 30"





### BOK DINING TABLE

100% solid oak <sup>Ⓞ</sup>

- 51500 140 × 80 × 76 cm - 55" × 31" × 30"
- 51495 160 × 80 × 76 cm - 63" × 31" × 30"
- 51496 180 × 90 × 76 cm - 71" × 35" × 30"
- 51497 200 × 95 × 76 cm - 79" × 37" × 30"
- 51498 220 × 95 × 76 cm - 87" × 37" × 30"
- 51499 240 × 100 × 76 cm - 94" × 39" × 30"



100% black tainted solid oak <sup>Ⓟ</sup> <sup>Ⓟ</sup>

- 51511 140 × 80 × 76 cm - 55" × 31" × 30"
- 51505 160 × 80 × 76 cm - 63" × 31" × 30"
- 51506 180 × 90 × 76 cm - 71" × 35" × 30"
- 51507 200 × 95 × 76 cm - 79" × 37" × 30"
- 51508 220 × 95 × 76 cm - 87" × 37" × 30"
- 51509 240 × 100 × 76 cm - 94" × 39" × 30"



100% solid teak FSC<sup>®</sup>

- 10157 140 × 80 × 76 cm - 55" × 31" × 30"
- 10158 160 × 80 × 76 cm - 63" × 31" × 30"
- 10159 180 × 90 × 76 cm - 71" × 35" × 30"
- 10160 200 × 95 × 76 cm - 79" × 37" × 30"
- 10161 220 × 95 × 76 cm - 87" × 37" × 30"
- 10162 240 × 100 × 76 cm - 94" × 39" × 30"



### NEW GEOMETRIC DINING TABLE

100% solid oak <sup>Ⓞ</sup>

- 55013 250 × 100 × 76 cm  
98" × 39" × 30"



### NEXUS DINING TABLE

100% solid oak <sup>Ⓞ</sup>

- 50130 210 × 100 × 76 cm  
83" × 39" × 30"
- 50128 230 × 105 × 76 cm  
91" × 41" × 30"







### PROFILE DINING TABLE

100% solid oak (V)

- 50002 180 × 100 × 76 cm  
71" × 39" × 30"
- 50003 200 × 100 × 76 cm  
79" × 39" × 30"
- 50004 220 × 100 × 76 cm  
87" × 39" × 30"



### SLICE DINING TABLE

100% solid oak (O)

- 50571 160 × 90 × 76 cm - 63" × 35" × 30"
- 50573 180 × 90 × 76 cm - 71" × 35" × 30"
- 50574 200 × 100 × 76 cm - 79" × 39" × 30"
- 50575 220 × 100 × 76 cm - 87" × 39" × 30"



### MIKADO DINING TABLE

100% solid oak (O)

- 50179 203 × 106 × 76 cm  
80" × 42" × 30"
- 50178 240 × 110 × 76 cm  
94" × 43" × 30"
- 50180 280 × 110 × 76 cm  
110" × 43" × 30"



### MIKADO OVAL DINING TABLE

100% solid oak (O)

- 50181 267 × 138 × 76 cm  
105" × 54" × 30"





### MIKADO ROUND DINING TABLE

100% solid oak <sup>Ⓢ</sup>

50545 150 × 150 × 76 cm  
59" × 59" × 30"



### TORSION ROUND DINING TABLE

100% solid oak <sup>Ⓢ</sup>

50017 70 × 70 × 76 cm  
28" × 28" × 30"  
50018 90 × 90 × 76 cm  
35" × 35" × 30"  
50019 127 × 127 × 76 cm  
50" × 50" × 30"



### CIRCLE ROUND DINING TABLE

100% solid oak <sup>Ⓢ</sup>

50165 136 × 136 × 76 cm  
54" × 54" × 30"  
50164 163 × 163 × 76 cm  
64" × 64" × 30"



100% black tainted solid oak <sup>Ⓢ</sup> <sup>Ⓟ</sup>

50011 70 × 70 × 76 cm  
28" × 28" × 30"  
50013 90 × 90 × 76 cm  
35" × 35" × 30"  
50012 127 × 127 × 76 cm  
50" × 50" × 30"







TORSION SQUARE DINING TABLE

100% solid oak <sup>Ⓟ</sup>

50021 70 × 70 × 76 cm  
28" × 28" × 30"



100% black tainted solid oak <sup>Ⓟ</sup> <sup>Ⓟ</sup>

50015 70 × 70 × 76 cm  
28" × 28" × 30"





#### MIKADO ROUND COFFEE TABLE

100% solid oak ©

50542 100 × 100 × 42 cm  
39" × 39" × 17"



#### TRIPOD ROUND COFFEE TABLE

100% solid oak ✓

50530 96 × 96 × 36 cm  
38" × 38" × 14"



#### DISC ROUND COFFEE TABLE

100% solid oak and black metal legs ©

26607 80 × 80 × 35 cm  
31" × 31" × 14"



#### ORB OVAL COFFEE TABLE

100% solid oak and black metal legs ©

26686 130 × 60 × 40 cm  
51" × 24" × 16"



#### MIKADO OVAL COFFEE TABLE

100% solid oak ©

50544 143 × 67 × 42 cm  
56" × 26" × 17"





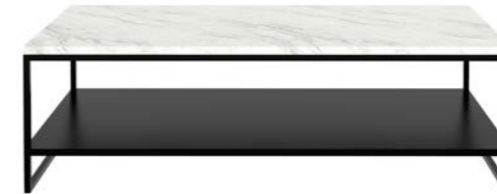
**NORDIC COFFEE TABLE**  
100% solid oak with 1 drawer ©

51445 120 × 70 × 35 cm  
47" × 28" × 14"



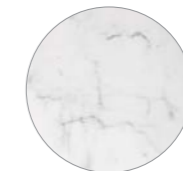
**TABWA COFFEE TABLE**  
100% dark teak veneer table top and oak veneer body ©

12209 170 × 120 × 36 cm  
67" × 47" × 14"



**STONE COFFEE TABLE**  
carrara marble top and a black metal frame

60074 110 × 110 × 38 cm  
43" × 43" × 15"  
60073 120 × 70 × 38 cm  
47" × 28" × 15"



**RISE COFFEE TABLE**  
100% solid oak and black metal legs ©

50135 150 × 60 × 37 cm  
59" × 24" × 15"  
50138 100 × 100 × 37 cm  
39" × 39" × 15"  
50139 120 × 70 × 37 cm  
47" × 28" × 15"



**THIN COFFEE TABLE**  
100% black tainted solid oak and black metal legs ©

50520 70 × 70 × 30 cm  
28" × 28" × 12"



**LUNA COFFEE TABLE**  
made from mineral powders, water, earth,  
natural colour pigments and metallic powders

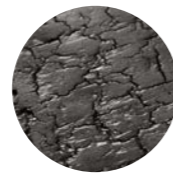
lava taupe  
25898 50 × 50 × 45 cm  
20" × 20" × 18"



lava whisky  
25899 50 × 50 × 45 cm  
20" × 20" × 18"



lava black  
25897 50 × 50 × 45 cm  
20" × 20" × 18"



**LUNA COFFEE TABLE**  
made from mineral powders, water, earth,  
natural colour pigments and metallic powders

lava linear taupe  
25904 65 × 65 × 41 cm  
26" × 26" × 16"



lava linear whisky  
25906 65 × 65 × 41 cm  
26" × 26" × 16"



lava linear black  
25908 65 × 65 × 41 cm  
26" × 26" × 16"







### LUNA COFFEE TABLE

made from mineral powders, water, earth,  
natural colour pigments and metallic powders

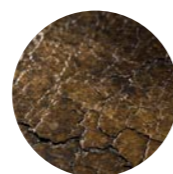
lava taupe

25903 80 × 80 × 35 cm  
31" × 31" × 14"



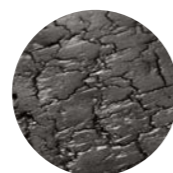
lava whisky

25905 80 × 80 × 35 cm  
31" × 31" × 14"



lava black

25907 80 × 80 × 35 cm  
31" × 31" × 14"



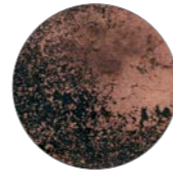
*Natural mineral powders and colour pigments  
blend together to form a distinctive texture,  
created and shaped by hand by our skilled artisans.*



**NESTING COFFEE TABLE SET OF 2**  
heavy aged mirror top and a black metal frame

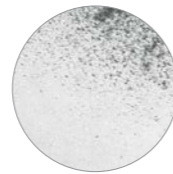
bronze copper

20700 61 × 61 × 36 cm - 24" × 24" × 14"  
92 × 92 × 41 cm - 36" × 36" × 16"



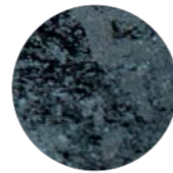
clear

20722 61 × 61 × 36 cm - 24" × 24" × 14"  
92 × 92 × 41 cm - 36" × 36" × 16"



charcoal

20701 61 × 61 × 36 cm - 24" × 24" × 14"  
92 × 92 × 41 cm - 36" × 36" × 16"

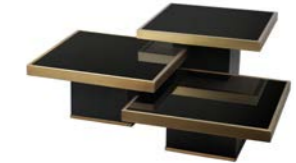


**TRIFECTA COFFEE TABLE**  
mirror top with brass-plated frame  
and black tained oak base

charcoal

20785 61 × 61 × 23 cm  
24" × 24" × 9"  
20786 61 × 61 × 30 cm  
24" × 24" × 12"  
20787 61 × 61 × 38 cm  
24" × 24" × 15"

These coffee tables are sold separately  
but look great as a set.



**TABWA ROUND COFFEE TABLE SET OF 3**  
100% solid teak and black metal legs

teak dark

12236 64 × 64 × 35 cm - 25" × 25" × 14"  
79 × 79 × 45 cm - 31" × 31" × 18"  
95 × 95 × 40 cm - 37" × 37" × 16"







### TRAY COFFEE TABLES

\* trays to be ordered separately. Find them in the Ethnicraft Accessories catalogue.

#### ROUND TRAY COFFEE TABLE

black tainted wood and black metal frame

20328 93 × 93 × 38 cm  
37" × 37" × 15"



#### ROUND TRAY COFFEE TABLE SET

black tainted wood and black metal frame

20726 49 × 49 × 31 cm - 62 × 62 × 38 cm  
19" × 19" × 12" - 24" × 24" × 15"  
20329 62 × 62 × 31 cm - 93 × 93 × 38 cm  
24" × 24" × 12" - 37" × 37" × 15"



#### RECTANGLE TRAY COFFEE TABLE SET

black tainted wood and black metal frame

20725 47 × 37 × 31 cm - 62 × 47 × 38 cm  
19" × 15" × 12" - 24" × 19" × 15"



#### SQUARE TRAY COFFEE TABLE SET

black tainted wood and black metal frame

20791 39 × 39 × 38 cm - 52 × 52 × 31 cm  
15" × 15" × 15" - 20" × 20" × 12"



### GEOMETRIC SIDE TABLE

100% solid oak <sup>(V)</sup>  
 50537 51 × 51 × 50 cm  
 20" × 20" × 20"



100% black tainted solid oak <sup>(V)</sup> <sup>(B)</sup>  
 50536 51 × 51 × 50 cm  
 20" × 20" × 20"



100% solid teak FSC<sup>®</sup> <sup>(V)</sup>  
 10196 51 × 51 × 50 cm  
 20" × 20" × 20"



### COVE SIDE TABLE

100% black tainted solid teak FSC<sup>®</sup> <sup>(V)</sup>  
 10190 50 × 50 × 50 cm  
 20" × 20" × 20"



### FIN SIDE TABLE

100% black tainted solid teak FSC<sup>®</sup> <sup>(V)</sup> <sup>(B)</sup>  
 10193 50 × 50 × 50 cm  
 20" × 20" × 20"



### ARC SIDE TABLE

100% black tainted solid teak FSC<sup>®</sup>  
 and a black metal base <sup>(V)</sup>  
 10199 50 × 50 × 47 cm  
 20" × 20" × 19"





**OBLIC SIDE TABLE**

100% black tainted solid teak FSC® (V)

10185 52 × 52 × 49 cm  
20" × 20" × 19"



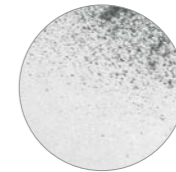
**NESTING SIDE TABLE SET OF 2**

heavy aged mirror table top and black metal frame

bronze copper  
20702 43 × 43 × 56 cm - 17" × 17" × 22"  
56 × 56 × 69 cm - 22" × 22" × 27"



clear  
20723 43 × 43 × 56 cm - 17" × 17" × 22"  
56 × 56 × 69 cm - 22" × 22" × 27"



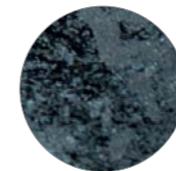
**COMPACT SIDE TABLE**

charcoal mirror table top and black metal frame

20760 30 × 30 × 60 cm  
12" × 12" × 24"  
20762 40 × 40 × 60 cm  
16" × 16" × 24"  
20764 40 × 40 × 90 cm  
16" × 16" × 35"



charcoal  
20703 43 × 43 × 56 cm - 17" × 17" × 22"  
56 × 56 × 69 cm - 22" × 22" × 27"





**CELESTE SIDE TABLE**

made from mineral powders, water, earth, natural colour pigments and metallic powders

lava taupe

25923 45 × 45 × 43 cm  
18" × 18" × 17"



lava whisky

25925 45 × 45 × 43 cm  
18" × 18" × 17"



lava black

25927 45 × 45 × 43 cm  
18" × 18" × 17"



**CELESTE SIDE TABLE**

made from mineral powders, water, earth, natural colour pigments and metallic powders

lava linear taupe

25922 45 × 45 × 50 cm  
18" × 18" × 20"



lava linear whisky

25924 45 × 45 × 50 cm  
18" × 18" × 20"



lava linear black

25926 45 × 45 × 50 cm  
18" × 18" × 20"







### TRIPOD SIDE TABLE

100% solid oak <sup>Ⓟ</sup>  
50508 46 × 46 × 56 cm  
18" × 18" × 22"



100% black tainted solid oak <sup>Ⓟ</sup>  
50527 46 × 46 × 56 cm  
18" × 18" × 22"



100% solid teak FSC®  
14212 46 × 46 × 56 cm  
18" × 18" × 22"



### MIKADO SIDE TABLE

100% solid oak <sup>Ⓟ</sup>  
50541 50 × 50 × 50 cm  
20" × 20" × 20"



### BOK SIDE TABLE

100% solid oak <sup>Ⓟ</sup>  
51501 43 × 43 × 50 cm  
17" × 17" × 20"



100% black tainted solid oak <sup>Ⓟ</sup> <sup>Ⓟ</sup>  
51510 43 × 43 × 50 cm  
17" × 17" × 20"



### TWIST SIDE TABLE

100% solid oak ©

50556	41 × 41 × 41 cm 16" × 16" × 16"
50557	46 × 46 × 46 cm 18" × 18" × 18"
50558	51 × 51 × 51 cm 20" × 20" × 20"



### RISE SIDE TABLE

100% solid oak and black metal legs ©

50134	50 × 30 × 55 cm 20" × 12" × 22"
-------	------------------------------------



### MONOLIT SIDE TABLE

100% solid oak and metal frame with a removable cover ©

black frame

26865	48 × 48 × 51 cm 19" × 19" × 20"
-------	------------------------------------

white frame

26858	48 × 48 × 51 cm 19" × 19" × 20"
-------	------------------------------------



### N701 SIDE TABLE

solid wood and black metal legs

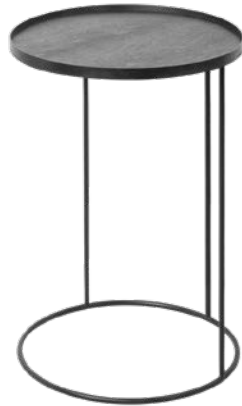
100% solid oak ©

50121	40 × 40 × 53 cm 16" × 16" × 21"
-------	------------------------------------

100% solid teak FSC®

10125	40 × 40 × 53 cm 16" × 16" × 21"
-------	------------------------------------





### TRAY SIDE TABLES

\* trays to be ordered separately. Find them in the Ethnicraft Accessories catalogue.

#### ROUND TRAY SIDE TABLE

black tainted wood and black metal frame

- 20704 49 × 49 × 66 cm  
19" × 19" × 26"
- 20339 62 × 62 × 66 cm  
24" × 24" × 16"

#### ROUND TRAY SIDE TABLE SET

black tainted wood and black metal frame

- 20721 49 × 49 × 66 cm - 62 × 62 × 57 cm  
19" × 19" × 26" - 24" × 24" × 22"



#### RECTANGLE TRAY SIDE TABLE

black tainted wood and black metal frame

- 20706 70 × 32 × 64 cm  
28" × 13" × 25"
- 20720 62 × 47 × 64 cm  
24" × 19" × 25"

#### OBLONG TRAY SIDE TABLE

black tainted wood and black metal frame

- 20790 69 × 33 × 65 cm  
27" × 13" × 26"

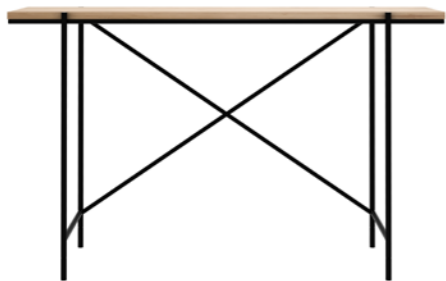


**MONOLIT CONSOLE**  
solid wood and black metal  
frame with 2 drawers

100% solid oak <sup>Ⓢ</sup>  
26872 122 × 40 × 85 cm  
48" × 16" × 33"



100% black tainted solid oak <sup>Ⓢ</sup> <sup>Ⓟ</sup>  
26873 122 × 40 × 85 cm  
48" × 16" × 33"



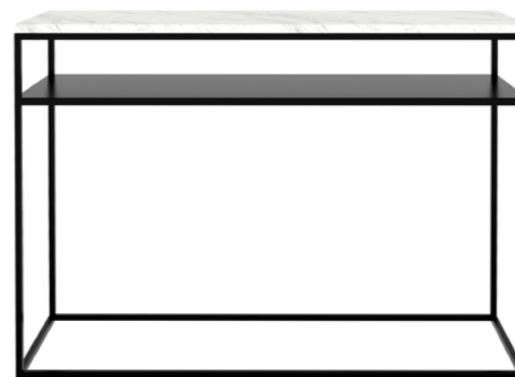
**RISE CONSOLE**  
100% solid oak with black metal legs <sup>Ⓢ</sup>

50136 120 × 35 × 75 cm  
47" × 14" × 30"



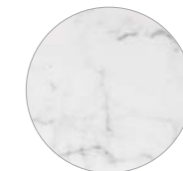
**NORDIC CONSOLE**  
100% solid oak with 2 drawers <sup>Ⓢ</sup>

51447 120 × 40 × 85 cm  
47" × 16" × 33"  
51444 160 × 40 × 85 cm  
63" × 16" × 33"



**STONE CONSOLE**  
carrara marble top with black metal frame

60072 120 × 40 × 86 cm  
47" × 16" × 34"





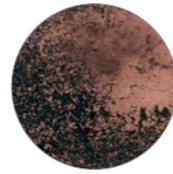


AGED CONSOLE

heavy aged mirror top with black metal frame

bronze copper

20724 122 × 36 × 81 cm  
48" × 14" × 32"

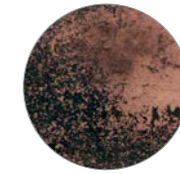


AGED SOFA CONSOLE

heavy aged mirror top with black metal frame

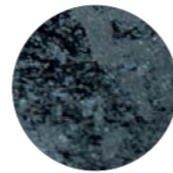
bronze copper

20731 160 × 36 × 70 cm  
63" × 14" × 28"



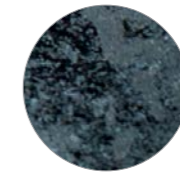
charcoal

20746 122 × 36 × 81 cm  
48" × 14" × 32"



charcoal

20748 160 × 36 × 70 cm  
63" × 14" × 28"



Seating



BOK DINING CHAIR

100% solid oak



51490 50 × 54 × 76 cm  
20" × 21" × 30"  
seating height: 46 cm - 18"



50073 50 × 54 × 76 cm  
20" × 21" × 30"  
seating height: 46 cm - 18"

100% solid oak upholstered  
with semi aniline cognac leather



51488 50 × 54 × 76 cm  
20" × 21" × 30"  
seating height: 48 cm - 19"



100% solid oak upholstered  
with dark brown fabric



51489 50 × 54 × 76 cm  
20" × 21" × 30"  
seating height: 48 cm - 19"



BOK DINING CHAIR

100% black tained solid oak



51491 50 × 54 × 76 cm  
20" × 21" × 30"  
seating height: 46 cm - 18"

100% black tained solid oak upholstered  
with black semi aniline leather



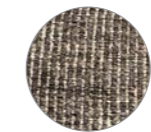
51492 50 × 54 × 76 cm  
20" × 21" × 30"  
seating height: 48 cm - 19"



100% black tained solid oak upholstered  
with grey fabric



51493 50 × 54 × 76 cm  
20" × 21" × 30"  
seating height: 48 cm - 19"




100% solid teak FSC®

10156 50 × 54 × 76 cm  
20" × 21" × 30"  
seating height: 46 cm - 18"





**NEW**  
**PEBBLE DINING CHAIR**


100% solid oak 


50664 44 × 54 × 78 cm  
17" × 21" × 31"  
seating height: 47 cm - 19"



**CASALE DINING CHAIR**


100% solid oak

 50653 46 × 52 × 79 cm  
18" × 20" × 31"  
seating height: 47 cm - 18"

 50072 46 × 52 × 79 cm  
18" × 20" × 31"  
seating height: 47 cm - 18"



**FACETTE DINING CHAIR**



100% solid oak and black metal legs 



27046 43 × 53 × 83 cm  
17" × 21" × 33"  
seating height: 47 cm - 19"



**EX 1 DINING CHAIR**

100% solid oak

  50657 43 × 56 × 82 cm  
17" × 22" × 32"  
seating height: 47 cm - 19"

  50070 43 × 56 × 82 cm  
17" × 22" × 32"  
seating height: 47 cm - 19"



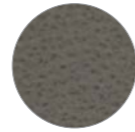
### DC DINING CHAIR

black metal frame with upholstery

**NEW**

olive green - semi aniline leather

60088 43 × 48 × 82 cm  
17" × 19" × 32"  
seating height: 50 cm - 20"



**NEW**

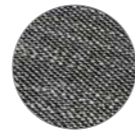
chocolate - semi aniline leather

60089 43 × 48 × 82 cm  
17" × 19" × 32"  
seating height: 50 cm - 20"



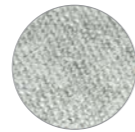
dark grey - 85% polyester & 15% viscose fabric

60078 43 × 48 × 82 cm  
17" × 19" × 32"  
seating height: 50 cm - 20"



light grey - 85% polyester & 15% viscose fabric

60079 43 × 48 × 82 cm  
17" × 19" × 32"  
seating height: 50 cm - 20"



### OSSO STOOL

100% solid oak

⓪  
53033 50 × 33 × 48 cm  
20" × 13" × 19"  
seating height: 48 cm - 18"

Ⓥ Ⓞ  
53035 50 × 33 × 48 cm  
20" × 13" × 19"  
seating height: 48 cm - 18"



100% black tained solid oak

Ⓥ  
53040 50 × 33 × 48 cm  
20" × 13" × 19"  
seating height: 48 cm - 18"

Ⓥ Ⓞ  
53042 50 × 33 × 48 cm  
20" × 13" × 19"  
seating height: 48 cm - 18"



### DC COUNTER STOOL

black metal frame with upholstery

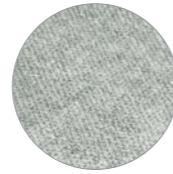
light grey

85% polyester & 15% viscose fabric

60081 43 × 48 × 94 cm

17" × 19" × 37"

seating height: 67 cm - 26"



### N3 KITCHEN COUNTER STOOL

100% solid oak ☉

50687 49 × 50 × 91 cm

19" × 20" × 36"

seating height: 67 cm - 26"



### OSSO COUNTER STOOL

100% solid oak

☉

53032 57 × 33 × 61 cm

22" × 13" × 24"

seating height: 58,5 cm - 23"

☉ ☉

53036 57 × 36 × 61 cm

22" × 14" × 24"

seating height: 58,5 cm - 23"



100% black tained solid oak

☑

53039 57 × 33 × 61 cm

22" × 13" × 24"

seating height: 58,5 cm - 23"

☑ ☉

53043 57 × 36 × 61 cm

22" × 14" × 24"

seating height: 58,5 cm - 23"



100% solid walnut ☉

43032 57 × 33 × 61 cm

22" × 13" × 24"

seating height: 58,5 cm - 23"





### BARETTO BAR STOOL

100% solid oak and black metal legs (V) (C)

50076 46 × 46 × 76 cm  
18" × 18" × 30"  
seating height: 76 cm - 30"



### N4 BAR STOOL

100% solid oak

(C)  
50688 48 × 50 × 110 cm  
19" × 20" × 43"  
seating height: 80 cm - 31"

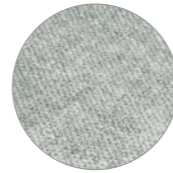
(V)  
50077 48 × 50 × 110 cm  
19" × 20" × 43"  
seating height: 80 cm - 31"



### DC BAR STOOL

black metal frame with upholstery

light grey  
85% polyester & 15% viscose fabric  
60083 43 × 49 × 112 cm  
17" × 19" × 44"  
seating height: 85 cm - 33"



### OSSO BAR STOOL

100% solid oak (V)

53034 57 × 33 × 80 cm  
22" × 13" × 31"  
seating height: 77,5 cm - 30.5"



100% black tainted solid oak (V)

53041 57 × 33 × 80 cm  
22" × 13" × 31"  
seating height: 77,5 cm - 30.5"



### DC LOUNGE CHAIR

black metal frame with upholstery

**NEW**

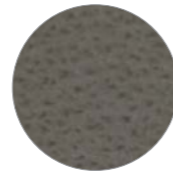
olive green

semi aniline leather

60086 60 × 66 × 74 cm

24" × 26" × 29"

seating height: 39 cm - 16"



**NEW**

chocolate

semi aniline leather

60087 60 × 66 × 74 cm

24" × 26" × 29"

seating height: 39 cm - 16"



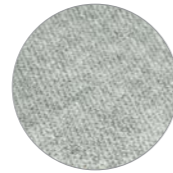
light grey

85% polyester & 15% viscose fabric

60085 60 × 66 × 74 cm

24" × 26" × 29"

seating height: 39 cm - 16"



### GABBIA LOUNGE CHAIR

100% solid oak and black metal legs ©

26694 62 × 69 × 76 cm

24" × 27" × 30"

seating height: 45 cm - 18"



### N2 LOUNGE CHAIR

100% solid oak ©

50686 58 × 69 × 70 cm

23" × 27" × 28"

seating height: 40 cm - 16"



### SPINDLE BENCH

100% solid oak <sup>Ⓢ</sup>

51243 150 × 35 × 60 cm

59" × 14" × 24"

seating height: 46 cm - 18"



100% solid walnut <sup>Ⓢ</sup>

45180 150 × 35 × 60 cm

59" × 14" × 24"

seating height: 46 cm - 18"



### STRAIGHT BENCH

100% solid oak <sup>Ⓢ</sup>

50385 140 × 35 × 45 cm

55" × 14" × 18"

50386 160 × 35 × 45 cm

63" × 14" × 18"

50388 180 × 35 × 45 cm

71" × 14" × 18"

50390 200 × 35 × 45 cm

79" × 14" × 18"

seating height: 45 cm - 17.7"





### N701 SOFA 1 SEATER

with a seating height of 43 cm - 17"

beige

84% polyester and 16% acrylic fabric

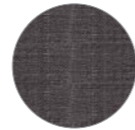
20229 80 × 91 × 76 cm  
32" × 36" × 30"



dark grey

84% polyester and 16% acrylic fabric

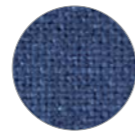
20232 80 × 91 × 76 cm  
32" × 36" × 30"



blue

84% polyester and 16% acrylic fabric

20073 80 × 91 × 76 cm  
32" × 36" × 30"



old saddle

100% aniline leather

20082 80 × 91 × 76 cm  
32" × 36" × 30"



Clips included to seamlessly connect the sofa modules together



### N701 SOFA 2 SEATER

with a seating height of 43 cm - 17"

beige

84% polyester and 16% acrylic fabric

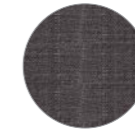
20230 140 × 91 × 76 cm  
55" × 36" × 30"



dark grey

84% polyester and 16% acrylic fabric

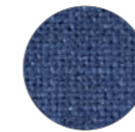
20233 140 × 91 × 76 cm  
55" × 36" × 30"



blue

84% polyester and 16% acrylic fabric

20074 140 × 91 × 76 cm  
55" × 36" × 30"



old saddle

100% aniline leather

20083 140 × 91 × 76 cm  
55" × 36" × 30"



Clips included to seamlessly connect the sofa modules together



### N701 SOFA 3 SEATER

with a seating height of 43 cm - 17"

beige

84% polyester and 16% acrylic fabric

20231 210 × 91 × 76 cm

83" × 36" × 30"

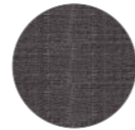


dark grey

84% polyester and 16% acrylic fabric

20234 210 × 91 × 76 cm

83" × 36" × 30"

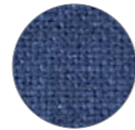


blue

84% polyester and 16% acrylic fabric

20075 210 × 91 × 76 cm

83" × 36" × 30"



old saddle

100% aniline leather

20084 210 × 91 × 76 cm

83" × 36" × 30"



Clips included to seamlessly connect the sofa modules together



### N701 SOFA FOOTSTOOL

with a seating height of 43 cm - 17"

beige

84% polyester and 16% acrylic fabric

20227 70 × 70 × 43 cm

28" × 28" × 17"

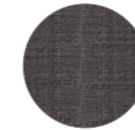


dark grey

84% polyester and 16% acrylic fabric

20228 70 × 70 × 43 cm

28" × 28" × 17"

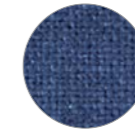


blue

84% polyester and 16% acrylic fabric

20072 70 × 70 × 43 cm

28" × 28" × 17"



old saddle

100% aniline leather

20081 70 × 70 × 43 cm

28" × 28" × 17"



Clips included to seamlessly connect the sofa modules together



**N701 SOFA ROUND CORNER**

with a seating height of 43 cm - 17"

beige

84% polyester and 16% acrylic fabric

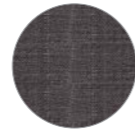
20212 120 × 120 × 76 cm  
47" × 47" × 30"



dark grey

84% polyester and 16% acrylic fabric

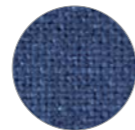
20213 120 × 120 × 76 cm  
47" × 47" × 30"



blue

84% polyester and 16% acrylic fabric

20070 120 × 120 × 76 cm  
47" × 47" × 30"



old saddle

100% aniline leather

20079 120 × 120 × 76 cm  
47" × 47" × 30"



Clips included to seamlessly connect  
the sofa modules together



**N701 SOFA CORNER**

with a seating height of 43 cm - 17"

beige

84% polyester and 16% acrylic fabric

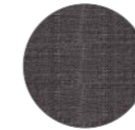
20209 91 × 91 × 76 cm  
36" × 36" × 30"



dark grey

84% polyester and 16% acrylic fabric

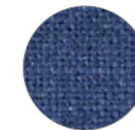
20210 91 × 91 × 76 cm  
36" × 36" × 30"



blue

84% polyester and 16% acrylic fabric

20071 91 × 91 × 76 cm  
36" × 36" × 30"



old saddle

100% aniline leather

20080 91 × 91 × 76 cm  
36" × 36" × 30"



Clips included to seamlessly connect  
the sofa modules together



Storage



OSCAR SIDEBOARD

100% natural and black tainted solid teak with black metal legs

2 sliding doors and 3 drawers  
10143 224 × 40 × 89 cm  
88" × 16" × 35"



GRAPHIC SIDEBOARD

100% black tainted solid teak frame and teak veneer front panel with black metal legs (V) (B)

3 doors  
10062 168 × 45 × 80 cm  
66" × 18" × 31"

4 doors  
10061 224 × 45 × 80 cm  
88" × 18" × 31"

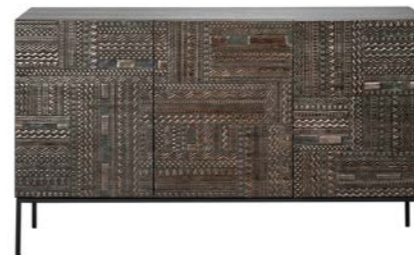
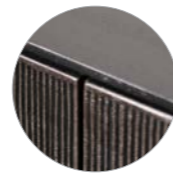


GROOVES SIDEBOARD

100% dark tainted solid teak and black metal legs (V)

3 doors  
12252 152 × 45 × 87 cm  
60" × 18" × 34"

4 doors  
12253 202 × 45 × 87 cm  
80" × 18" × 34"



TABWA SIDEBOARD

100% dark tainted solid teak doors and veneer frame with black metal legs (V)

3 doors  
12188 150 × 45 × 85 cm  
59" × 18" × 33"

4 doors  
12189 200 × 45 × 85 cm  
79" × 18" × 33"





### ANDERS SIDEBOARD

grey tempered glass doors and black metal legs

2 doors

60068 87 × 45 × 80 cm  
34" × 18" × 31"

4 doors

60069 170 × 45 × 80 cm  
67" × 18" × 31"

### STAIRS SIDEBOARD

100% solid oak and black metal legs

3 doors

50763 150 × 46 × 80 cm  
59" × 18" × 31"

4 doors

50764 200 × 46 × 80 cm  
79" × 18" × 31"



### SHADOW SIDEBOARD

100% solid oak and black metal legs

1 door and 3 drawers

51388 134 × 45 × 80 cm  
53" × 18" × 31"

2 doors and 3 drawers

51387 180 × 45 × 80 cm  
71" × 18" × 31"

3 doors and 3 drawers

51386 224 × 45 × 80 cm  
88" × 18" × 31"



### WHITEBIRD SIDEBOARD

100% solid oak and black metal legs <sup>Ⓟ</sup>

3 doors

51464 150 × 45 × 85 cm  
59" × 18" × 33"



### BLACKBIRD SIDEBOARD

100% solid oak and black tainted oak with black metal legs <sup>Ⓟ</sup> <sup>Ⓟ</sup>

3 doors

51481 150 × 45 × 85 cm  
59" × 18" × 33"



2 doors and 3 drawers

51468 180 × 45 × 80 cm  
71" × 18" × 31"



2 doors and 3 drawers

51471 180 × 45 × 80 cm  
71" × 18" × 31"



3 doors and 2 drawers

51467 180 × 45 × 90 cm  
71" × 18" × 35"



3 doors and 2 drawers

51472 180 × 45 × 90 cm  
71" × 18" × 35"





**MONOLIT SIDEBOARD**  
solid wood and black metal frame

100% solid oak <sup>Ⓞ</sup>  
2 doors  
26860 110 × 45 × 78 cm  
43" × 18" × 31"



100% black tainted solid oak <sup>Ⓟ</sup> <sup>Ⓟ</sup>  
2 doors  
26861 110 × 45 × 78 cm  
43" × 18" × 31"



**WAVE SIDEBOARD**  
100% solid oak <sup>Ⓞ</sup>

1 door and 3 drawers  
51450 148 × 46 × 77 cm  
58" × 18" × 30"



2 doors and 3 drawers  
51451 205 × 46 × 77 cm  
81" × 18" × 30"



### BURGER SIDEBOARD

100% solid oak ☉

4 doors

51391 200 × 45 × 85 cm  
79" × 18" × 33"



5 doors and 3 drawers

51393 250 × 45 × 85 cm  
98" × 18" × 33"



### SHADOW SIDEBOARD

100% solid oak ☉

2 doors

51370 109 × 45 × 84 cm  
43" × 18" × 33"



3 doors

51371 156 × 45 × 84 cm  
61" × 18" × 33"



4 doors

51372 203 × 45 × 84 cm  
80" × 18" × 33"



5 doors

51373 250 × 45 × 84 cm  
98" × 18" × 33"



LIGNA SIDEBOARD

100% solid oak and stainless steel legs ©

2 doors and 2 drawers

50949 110 × 45 × 78 cm

43" × 18" × 31"



3 doors and 3 drawers

50950 165 × 45 × 78 cm

65" × 18" × 31"



4 doors and 4 drawers

50951 220 × 45 × 78 cm

87" × 18" × 31"



LIGNA SIDEBOARD

100% solid oak and black metal legs ©

2 doors and 2 drawers

51114 110 × 45 × 78 cm

43" × 18" × 31"



3 doors and 3 drawers

51115 165 × 45 × 78 cm

65" × 18" × 31"



4 doors and 4 drawers

51116 220 × 45 × 78 cm

87" × 18" × 31"





### NORDIC SIDEBOARD

100% solid oak ☺

2 doors

51436 80 × 40 × 78 cm  
31" × 16" × 31"



3 doors

51437 158 × 45 × 78 cm  
62" × 18" × 31"



4 doors

51438 210 × 45 × 78 cm  
83" × 18" × 31"

*With both function and character in mind,  
our sideboard collection ensures you'll find a design  
that matches your needs and personality.*

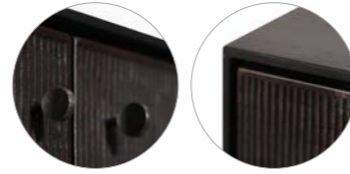


### GROOVES STORAGE CUPBOARD

100% dark tained solid teak and black metal legs <sup>Ⓟ</sup>

2 doors and 2 drawers

12250 102 × 45 × 162 cm  
40" × 18" × 64"



### BURUNG STORAGE CUPBOARD

black tained solid oak and bamboo spokes <sup>Ⓟ</sup>

2 sliding doors

12345 104 × 45 × 172 cm  
41" × 18" × 68"



### TABWA STORAGE CUPBOARD

100% dark tained solid teak doors and veneer frame with black metal legs <sup>Ⓟ</sup>

2 doors and 2 drawers

12185 100 × 45 × 160 cm  
39" × 18" × 63"  
12184 126 × 45 × 180 cm  
50" × 18" × 71"





**ANDERS STORAGE CUPBOARD**  
grey tempered glass doors and black metal legs

2 shelves  
60070 87 × 45 × 160 cm  
34" × 18" × 63"



3 shelves  
60071 87 × 45 × 180 cm  
34" × 18" × 71"



**WHITEBIRD STORAGE CUPBOARD**  
100% solid oak and black metal legs (V)

1 door and 1 drawer  
51469 110 × 45 × 178 cm  
43" × 18" × 70"



**BLACKBIRD STORAGE CUPBOARD**  
100% solid oak and black tainted oak with black metal legs (V) (B)

1 door and 1 drawer  
51470 110 × 45 × 178 cm  
43" × 18" × 70"



**WAVE STORAGE CUPBOARD**  
100% solid oak (C)

2 doors and 2 drawers  
51455 110 × 46 × 183 cm  
43" × 18" × 72"





### LIGNA STORAGE CUPBOARD

100% solid oak and black metal legs ©

4 doors and 2 drawers

51117 110 × 50 × 162 cm

43" × 20" × 64"



### SHADOW STORAGE CUPBOARD

100% solid oak ©

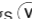
4 doors

51374 115 × 45 × 160 cm

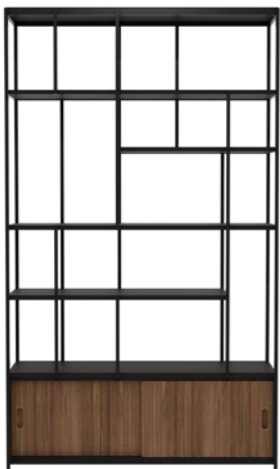
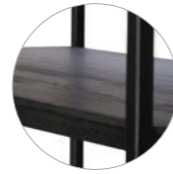
45" × 18" × 63"



### STUDIO RACK

100% black tainted solid teak and black metal legs 

10081 120 × 40 × 205 cm  
47" × 16" × 81"

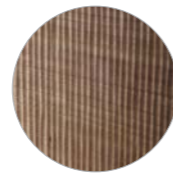


### STUDIO RACK

100% solid teak and black tainted solid teak with black metal legs

2 sliding doors

10082 120 × 40 × 205 cm  
47" × 16" × 81"

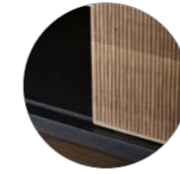


### OSCAR RACK



100% solid teak and black tainted solid teak with black metal legs

5 sliding doors

10144 120 × 40 × 195 cm  
47" × 16" × 77"

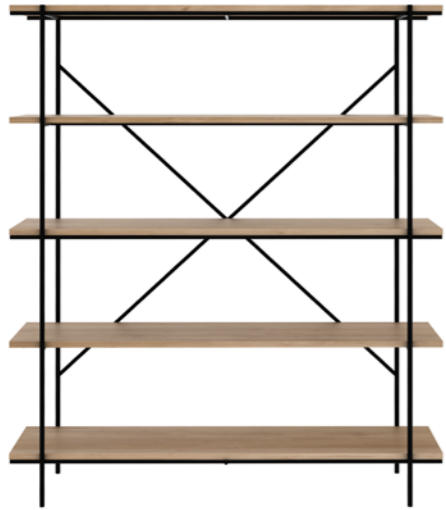


### BLACKBIRD RACK

100% solid oak and black tainted solid oak with black metal legs  

51482 100 × 37 × 207 cm  
39" × 15" × 81"

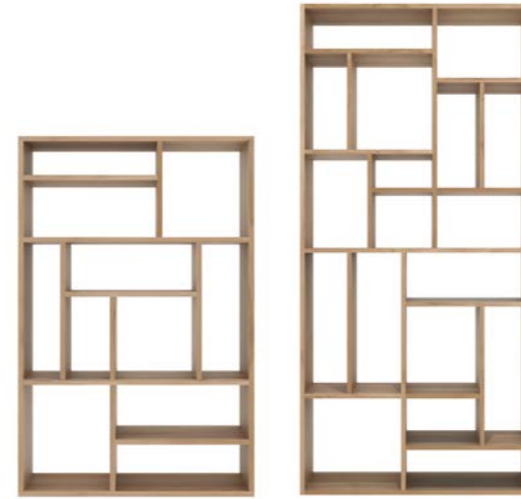




### RISE RACK

100% solid oak and black metal frame <sup>Ⓟ</sup>

50137 140 × 38 × 165 cm  
55" × 15" × 65"



### M RACK

100% solid oak <sup>Ⓟ</sup>

50772 90 × 30 × 139 cm  
35" × 12" × 55"  
50771 104 × 30 × 219 cm  
41" × 12" × 86"



### STAIRS RACK

100% solid oak <sup>Ⓟ</sup>

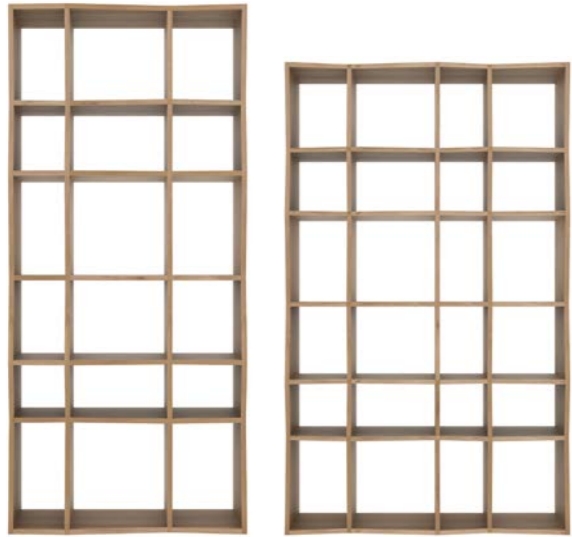
50762 103 × 36 × 206 cm  
41" × 14" × 81"



100% solid teak FSC<sup>®</sup>

14201 104 × 30 × 219 cm  
41" × 12" × 86"





### Z RACK

100% solid oak ☉

50779 93 × 38 × 207 cm  
37" × 15" × 81"

50778 125 × 37 × 207 cm  
49" × 15" × 81"



### NEW ABSTRACT COLUMN

100% black tainted solid teak ☽

10115 49 × 54 × 203 cm  
19" × 21" × 80"



### PIROUETTE BOOK RACK

100% solid oak ☉

4 drawers

45016 60 × 30 × 200 cm  
24" × 12" × 79"



### STAIRS COLUMN

100% solid oak ☉

50761 45 × 46 × 204 cm  
18" × 18" × 80"



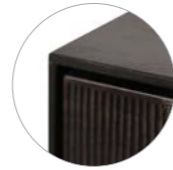


### GROOVES TV CUPBOARD

100% dark tainted solid teak and black metal legs <sup>Ⓟ</sup>

1 door and 1 drawer  
12255 162 × 45 × 53 cm  
64" × 18" × 21"

1 door and 2 drawers  
12254 242 × 45 × 53 cm  
95" × 18" × 21"



### TABWA TV CUPBOARD

100% dark tainted solid teak doors and veneer frame with black metal legs <sup>Ⓟ</sup>

1 door and 1 drawer  
12197 160 × 45 × 51 cm  
63" × 18" × 20"

1 door and 2 drawers  
12195 240 × 45 × 51 cm  
94" × 18" × 20"



### WHITEBIRD TV CUPBOARD

100% solid oak and black metal legs <sup>Ⓟ</sup>

2 doors and 2 drawers  
51466 180 × 45 × 61 cm  
71" × 18" × 24"



### BLACKBIRD TV CUPBOARD

100% solid oak and black tainted solid oak with black metal legs <sup>Ⓟ</sup> <sup>Ⓟ</sup>

2 doors and 2 drawers  
51473 180 × 45 × 61 cm  
71" × 18" × 24"



### LIGNA TV CUPBOARD

100% solid oak and black metal legs <sup>Ⓟ</sup>

2 drawers  
51118 140 × 45 × 52 cm  
55" × 18" × 20"



3 drawers  
51119 210 × 45 × 52 cm  
83" × 18" × 20"



### SHADOW TV CUPBOARD

100% solid oak ©

2 drawers

51375 140 × 46 × 42 cm  
55" × 18" × 17"

3 drawers

51376 210 × 46 × 42 cm  
83" × 18" × 17"



### SHADOW TV CUPBOARD

100% solid oak and black metal legs ©

2 doors and 2 drawers

51315 180 × 45 × 63 cm  
71" × 18" × 25"

3 doors and 2 drawers

51316 224 × 45 × 63 cm  
88" × 18" × 25"



### MONOLIT TV CUPBOARD

solid wood and black metal frame

100% solid oak ©

1 door and 1 drawer

26878 140 × 45 × 42 cm  
55" × 18" × 17"

100% black tained solid oak (V) (B)

1 door and 1 drawer

26879 140 × 45 × 42 cm  
55" × 18" × 17"



### NORDIC TV CUPBOARD

100% solid oak ©

1 door and 1 drawer

51439 120 × 46 × 45 cm  
47" × 18" × 18"

51440 180 × 46 × 45 cm  
71" × 18" × 18"



### WAVE TV CUPBOARD

100% solid oak ©

3 doors and 1 drawer

51453 210 × 46 × 60 cm  
83" × 18" × 24"



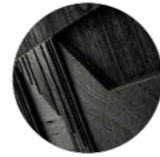


### GRAPHIC CHEST OF DRAWERS

100% black tainted solid teak frame and veneer front panel with black metal legs (V) (B)

3 drawers

10063 100 × 50 × 87 cm  
39" × 20" × 34"



### BURGER CHEST OF DRAWERS

100% solid oak (C)

4 drawers

51399 100 × 50 × 90 cm  
39" × 20" × 35"



### NORDIC CHEST OF DRAWERS

100% solid oak (C)

3 drawers

51176 130 × 56 × 83 cm  
51" × 22" × 33"



### SHADOW CHEST OF DRAWERS

100% solid oak (C)

1 door and 2 drawers

51186 160 × 50 × 84 cm  
63" × 20" × 33"



## SHADOW DRESSER

100% solid oak ☺

3 doors and 3 drawers

51185 115 × 60 × 200 cm

45" × 24" × 79"

*All of our designs are intentionally timeless. They withstand trends and associate well with different styles, and can be passed on from one home to the next carrying over the stories of one lifetime into another.*

# Office



## BOK DESK TABLE TOP

100% solid oak <sup>Ⓟ</sup>

- 51515 140 × 70 × 2 cm  
55" × 28" × 1"
- 51516 170 × 80 × 2 cm  
67" × 31" × 1"
- 51517 200 × 90 × 2 cm  
79" × 35" × 1"

100% black tained solid oak <sup>Ⓟ</sup> <sup>Ⓛ</sup>

- 51520 140 × 70 × 2 cm  
55" × 28" × 1"
- 51521 170 × 80 × 2 cm  
67" × 31" × 1"
- 51522 200 × 90 × 2 cm  
79" × 35" × 1"

## BOK DESK ADJUSTABLE LEGS

metal frame with motorized height adjustment

black frame

EU plug

- 59216 115/174 × 69 × 62/128 cm  
45/69" × 27" × 24/50"

UK plug

- 59217 115/174 × 69 × 62/128 cm  
45/69" × 27" × 24/50"

US plug

- 59218 115/174 × 69 × 62/128 cm  
45/69" × 27" × 24/50"

white frame

EU plug

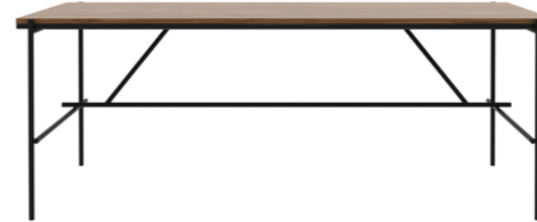
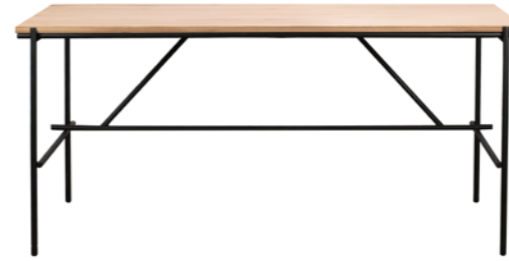
- 59219 115/174 × 69 × 62/128 cm  
45/69" × 27" × 24/50"

UK plug

- 59220 115/174 × 69 × 62/128 cm  
45/69" × 27" × 24/50"

US plug

- 59221 115/174 × 69 × 62/128 cm  
45/69" × 27" × 24/50"



## OSCAR DESK

solid wood and black metal legs

100% solid oak <sup>Ⓟ</sup>

- 50111 140 × 70 × 76 cm  
55" × 28" × 30"
- 50112 170 × 80 × 76 cm  
67" × 31" × 30"
- 50113 200 × 90 × 76 cm  
79" × 35" × 30"

100% solid teak FSC<sup>®</sup>

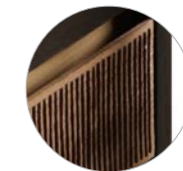
- 10138 140 × 70 × 76 cm  
55" × 28" × 30"
- 10139 170 × 80 × 76 cm  
67" × 31" × 30"
- 10140 200 × 90 × 76 cm  
79" × 35" × 30"

## OSCAR DESK WITH DRAWERS

100% solid teak and black tained solid teak with black metal legs

2 drawers

- 10141 200 × 90 × 76 cm  
79" × 35" × 30"







### WHITEBIRD DESK

100% solid oak and black metal legs (V)

2 drawers

51461 127 × 41 × 77 cm  
50" × 16" × 30"



### FRAME DESK

100% solid oak (O)

2 drawers

50516 120 × 43 × 82 cm  
47" × 17" × 32"

100% solid teak FSC®

2 drawers

14066 120 × 43 × 82 cm  
47" × 17" × 32"



### BLACKBIRD DESK

100% solid oak and black tainted solid oak with black metal legs (V) (B)

2 drawers

51478 127 × 41 × 77 cm  
50" × 16" × 30"



### WAVE DESK


100% solid oak (O)

1 drawer

51456 120 × 60 × 78 cm  
47" × 24" × 31"



### U DESK

100% solid oak 

- 50001 140 × 72 × 75 cm  
55" × 28" × 30"
- 50000 172 × 80 × 75 cm  
68" × 31" × 30"



### ORIGAMI DESK

100% solid oak 

black

5 drawers

- 45055 135 × 55 × 94 cm  
53" × 22" × 37"



cream

5 drawers

- 45056 135 × 55 × 94 cm  
53" × 22" × 37"



### MIKADO MEETING TABLE


100% solid oak 

with wire management box

- 50546 267 × 138 × 76 cm  
105" × 54" × 30"



### BOK COWORK DESK


100% solid oak with 3 sets of  
flip-open power management 

240 × 140 × 76 cm - 94" × 55" × 30"

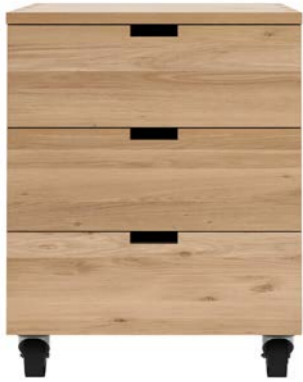
- 51513 CEE7/3
- 51514 CEE7/5
- 51525 BS 1363
- 51526 NEMA 5-15



### PROFILE HIGH MEETING TABLE

100% solid oak 

- 50006 220 × 100 × 110 cm  
87" × 39" × 43"



### BILLY BOX

100% solid oak <sup>Ⓞ</sup>

3 drawers

50620 50 × 56 × 66 cm  
20" × 22" × 26"



### OSCAR DRAWER UNIT

100% solid teak and black tinted solid teak

1 drawer

10136 50 × 56 × 65 cm  
20" × 22" × 26"



100% black tinted solid oak <sup>Ⓟ</sup> <sup>Ⓟ</sup>

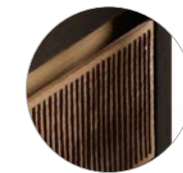
3 drawers

50621 50 × 56 × 66 cm  
20" × 22" × 26"



3 drawers

10137 50 × 56 × 65 cm  
20" × 22" × 26"





## Bedroom



### SPINDLE BED

100% solid oak <sup>Ⓟ</sup>

without slats

mattress size 160/200

51247 170 × 210 × 97 cm - 67" × 83" × 38"

mattress size 180/200

51246 190 × 210 × 97 cm - 75" × 83" × 38"

with slats \*only available in USA

US queen size, mattress size 153/203 - 60" × 80"

51249 163 × 213 × 97 cm - 64" × 84" × 38"

US king size, mattress size 193/203 - 76" × 80"

51248 203 × 213 × 97 cm - 80" × 84" × 38"



100% solid walnut <sup>Ⓟ</sup>

without slats

mattress size 160/200

45187 170 × 210 × 97 cm - 67" × 83" × 38"

mattress size 180/200

45186 190 × 210 × 97 cm - 75" × 83" × 38"

with slats \*only available in USA

US queen size, mattress size 153/203 - 60" × 80"

45189 163 × 213 × 97 cm - 64" × 84" × 38"

US king size, mattress size 193/203 - 76" × 80"

45188 203 × 213 × 97 cm - 80" × 84" × 38"



### AIR BED

100% solid oak <sup>Ⓟ</sup>

without slats

mattress size 160/200

51212 180 × 232 × 96 cm - 71" × 91" × 38"

mattress size 180/200

51211 200 × 232 × 96 cm - 79" × 91" × 38"

with slats \*only available in USA

queen size, mattress size 153/203 - 60" × 80"

51214 173 × 235 × 96 cm - 68" × 93" × 38"

US king size, mattress size 193/203 - 76" × 80"

51213 213 × 235 × 96 cm - 84" × 93" × 38"



### NORDIC II BED

100% solid oak <sup>Ⓟ</sup>

without slats

mattress size 140/200

51219 164 × 220 × 95 cm - 65" × 86" × 37"

mattress size 160/200

51216 184 × 220 × 95 cm - 72" × 86" × 37"

mattress size 180/200

51215 204 × 220 × 95 cm - 80" × 86" × 37"

with slats \*only available in USA

US queen size - mattress size 153/203 - 60" × 80"

51218 177 × 223 × 95 cm - 70" × 87" × 37"

US king size - mattress size 193/203 - 76" × 80"

51217 217 × 223 × 95 cm - 85" × 87" × 37"



**MADRA BED**  
100% solid oak ©

without slats

mattress size 160/200

51202 198 × 243 × 71 cm - 78" × 96" × 28"

mattress size 180/200

51201 218 × 243 × 71 cm - 86" × 96" × 28"

with slats \*only available in USA

US queen size - mattress size 153/203 - 60" × 80"

51204 191 × 246 × 71 cm - 75" × 97" × 28"

US king size - mattress size 193/203 - 76" × 80"

51203 231 × 246 × 71 cm - 91" × 97" × 28"



**SPINDLE BEDSIDE TABLE**

100% solid oak ©

1 drawer

51245 55 × 35 × 52 cm

22" × 14" × 20"



100% solid walnut ©

1 drawer

45185 55 × 35 × 52 cm

22" × 14" × 20"



**SLATTED BED BASE**

45003 80 × 200 × 9 cm

45004 90 × 200 × 9 cm



**AIR BEDSIDE TABLE**

100% solid oak ©

1 drawer

51210 56 × 44 × 37 cm

22" × 17" × 15"



### NORDIC II BEDSIDE TABLE

100% solid oak <sup>Ⓞ</sup>

1 drawer

51224 57 × 40 × 21 cm  
22" × 16" × 8"



### AZUR BEDSIDE TABLE

100% solid oak <sup>Ⓞ</sup>

1 drawers

51140 48 × 44 × 48 cm  
19" × 17" × 19"



### MADRA BEDSIDE TABLE

100% solid oak <sup>Ⓞ</sup>

1 drawer

51200 60 × 43 × 27 cm  
24" × 17" × 11"

### NORDIC II BEDSIDE TABLE

100% solid oak <sup>Ⓞ</sup>

1 drawer

51175 57 × 40 × 37 cm  
22" × 16" × 15"

### MONOLIT BEDSIDE TABLE

solid wood with metal frame

100% solid oak and black frame <sup>Ⓞ</sup>

1drawer

26869 48 × 48 × 51 cm  
19" × 19" × 20"

100% solid oak and white frame <sup>Ⓞ</sup>

1drawer

26868 48 × 48 × 51 cm  
19" × 19" × 20"

100% black tainted solid oak and black frame <sup>Ⓞ</sup> <sup>Ⓟ</sup>

1drawer

26870 48 × 48 × 51 cm  
19" × 19" × 20"



## Bathroom



### LAYERS SOLID SURFACE TOP


#### 1 integrated washbasin

- 58016 91 × 46 × 12 cm - 36" × 18" × 5"
- 58017 121 × 46 × 12 cm - 48" × 18" × 5"

#### 2 integrated washbasins

- 58018 141 × 46 × 12 cm - 56" × 18" × 5"
- 58019 186 × 46 × 12 cm - 73" × 18" × 5"

### LAYERS SINK CABINET

100% solid oak 

#### 2 drawers

- 58013 90 × 46 × 44 cm - 35" × 18" × 17"
- 58010 120 × 46 × 44 cm - 47" × 18" × 17"

#### 4 drawers

- 58014 140 × 46 × 44 cm - 55" × 18" × 17"
- 58011 185 × 46 × 44 cm - 73" × 18" × 17"

### LAYERS WHITE METAL FRAME

- 58171 90 × 46 × 34 cm - 35" × 18" × 13"
- 58172 120 × 46 × 34 cm - 47" × 18" × 13"
- 58173 140 × 46 × 34 cm - 55" × 18" × 13"
- 58174 185 × 46 × 34 cm - 73" × 18" × 13"

### SINK DRAIN

white, closable click system

- 38020 7 × 7 × 9 cm - 3" × 3" × 4"



### QUALITIME SOLID SURFACE TOP


#### 1 integrated washbasin

- 58160 91 × 55 × 13 cm - 36" × 22" × 5"
- 58161 121 × 55 × 13 cm - 48" × 22" × 5"

#### 2 integrated washbasins

- 58162 141 × 55 × 13 cm - 56" × 22" × 5"
- 58163 186 × 55 × 13 cm - 73" × 22" × 5"

### QUALITIME HANGING STRUCTURE

100% solid oak 

#### 1 drawer

- 58071 90 × 55 × 38 cm - 35" × 22" × 15"
- 58102 120 × 55 × 38 cm - 47" × 22" × 15"

#### 2 drawers

- 58072 140 × 55 × 38 cm - 55" × 22" × 15"
- 58073 185 × 55 × 38 cm - 73" × 22" × 15"

### SINK DRAIN

white, closable click system

- 38020 7 × 7 × 9 cm - 3" × 3" × 4"



### COLUMN

100% solid oak

hinges on right side

58061 44 × 44 × 183 cm  
17" × 17" × 72"

hinges on left side

58062 44 × 44 × 183 cm  
17" × 17" × 72"

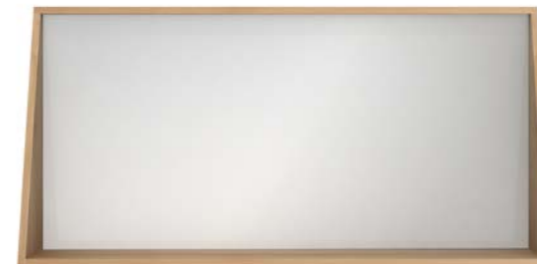


### LAYERS ROUND MIRROR

100% solid oak

58164 91 × 4 × 91 cm  
36" × 2" × 36"

58165 121 × 4 × 121 cm  
48" × 2" × 48"



### QUALITIME MIRROR

100% solid oak

58074 90 × 17 × 70 cm  
35" × 7" × 28"


58077 120 × 17 × 70 cm  
47" × 7" × 28"

58075 140 × 17 × 70 cm  
55" × 7" × 28"

58076 185 × 17 × 70 cm  
73" × 7" × 28"



### DRESSING UNIT ON WHEELS

100% solid oak 

3 drawers

58032 50 × 50 × 81 cm

20" × 20" × 32"



### ETHNILIGHT

led

38013 40 × 14 × 4 cm

16" × 6" × 2"



Outdoor



BOK OUTDOOR DINING TABLE

100% solid teak

- 10270 200 × 100 × 76 cm  
79" × 39" × 30"
- 10271 250 × 100 × 76 cm  
98" × 39" × 30"
- 10272 300 × 110 × 76 cm  
118" × 43" × 30"



BOK OUTDOOR DINING CHAIR

100% solid teak

- 10155 50 × 54 × 76 cm  
20" × 21" × 30"  
seating height: 47 cm - 19"



CIRCLE OUTDOOR DINING TABLE

100% solid teak

- 10281 136 × 136 × 76 cm  
54" × 54" × 30"
- 10280 163 × 163 × 76 cm  
64" × 64" × 30"



EX 1 OUTDOOR CHAIR

100% solid teak

- 10285 43 × 56 × 83 cm  
17" × 22" × 33"  
seating height: 47 cm - 19"





**JACK OUTDOOR LOUNGE CHAIR**  
100% solid teak and 100% polypropylene fabric

off white  
10250 76 × 90 × 73 cm  
30" × 35" × 29"  
seating height: 40 cm - 16"



mocha  
10253 76 × 90 × 73 cm  
30" × 35" × 29"  
seating height: 40 cm - 16"



**JACK OUTDOOR RAINCOVER**  
19970 76 cm - 30"



**JACK OUTDOOR SOFA**  
100% solid teak and 100% polypropylene fabric

off white  
10251 180 × 90 × 73 cm  
71" × 35" × 29"  
seating height: 40 cm - 16"



mocha  
10254 180 × 90 × 73 cm  
71" × 35" × 29"  
seating height: 40 cm - 16"



**JACK OUTDOOR RAINCOVER**  
19971 180 cm - 71"



#### JACK OUTDOOR SOFA

100% solid teak and 100% polypropylene fabric

off white

10252 265 × 90 × 73 cm  
104" × 35" × 29"  
seating height: 40 cm - 16"



mocha

10255 265 × 90 × 73 cm  
104" × 35" × 29"  
seating height: 40 cm - 16"



#### JACK OUTDOOR RAINCOVER

19972 265 cm - 104"

*Featuring upholstery woven in Belgium, every detail has been meticulously crafted to ensure comfort and elegance when enjoying the outdoors.*





# HOW TO TAKE CARE OF OUR PRODUCTS

## *About natural materials*

The beauty of natural materials lies in its peculiarities and imperfections. That is what separates true beauty from the artificial. Variations in wood grain and colour, knots, medullary rays and other natural characteristics are inherent in solid wood. These are far from flaws, but an intricate part of its character. Natural stone can have minor pitting or surface fissures. We believe that these imperfections contribute to the charm of Ethnicraft products.

Wood, like any other natural and porous material, continues to absorb and release humidity throughout its life. Although Ethnicraft designs furniture that adapts well to the hydrometric conditions of its environment, some cracking or movement may occur. Please do not be alarmed, this is a normal response to the furniture's environment.

### TIMELESS DESIGN

All our designs are intentionally timeless. They withstand trends and associate well with different styles, and they can be passed on from one home to the next, carrying over the stories of one lifetime into another. Our collections go back to the essence of what we believe is good design: pieces full of character, made from quality materials that age beautifully.

### DEVOTION

We create collections for every room of the house: from the furniture that defines the purpose of a space to the objects that layer it with meaning. Nothing excites us more than seeing how people love and use our products in the story of their life.

*We create the foundations of your home, to inspire the stories of your life.*

### CRAFTSMANSHIP

Outstanding craftsmanship is at the core of our brand, and behind the simplicity of our pieces lies a constant drive for innovation.

Incorporating advanced techniques to our process of creation, each new design is revised and reworked to the last detail: every curve, texture and line reflects our design values.

## *General tips & tricks*

- Recommended humidity in the room for interior products: between 40% and 60%.
- Ideal room temperature: 21°C/70°F during the day, not below 14°C/57°F at night.
- To prevent colour differences, do not place furniture or accessories in direct sunlight, move objects placed on the furniture from time to time and open extendable tables on a regular basis.
- Avoid exposure to extreme conditions: do not place furniture or accessories near heating sources or air-conditioned spaces.
- To prevent staining, we recommend that any spills are removed immediately.
- When cleaning the surface, always work in the direction of the wood grain.
- Use place mats and/or coasters to prevent hot pots and pans, or cold glasses and bottles, from damaging items.
- Do not drag the furniture along the floor, always lift the furniture when moving.
- Always ensure water and solutions used to clean the floor do not come into contact with the furniture's base, as it might leave permanent marks.
- Last but not least, we always recommend to carefully read the care instructions specific to your item.



# HOW TO TAKE CARE OF OUR PRODUCTS

## *Oak furniture*

### OILED

Our oiled oak furniture is finished with a pigmented hardwax oil. This finish gives the furniture its desired natural colour and has the advantage that stains do not penetrate the wood as easily. This is no foolproof guarantee against stains. In case of a spill, remove it immediately.

### REGULAR CARE

For regular dusting, use a dry cloth. For cleaning or in case of a spill, use a damp cloth and natural soap. Wipe in the direction of the grain. Do not use soap containing detergent or other chemicals. Dry with a soft clean cloth prevent spotting.

### REFRESHING THE SURFACE

To refresh your furniture or to remove superficial stains we recommend *Osmo Liquid Wax Cleaner (3029)*. This product cleans & regenerates the elegant character of the wood and slightly reinforces the original protective coating. *Osmo Liquid Wax Cleaner* is no guarantee against stains.

### THOROUGH CARE

The original hardwax coating may need to be renewed. We recommend using *Osmo Hardwax Oil Natural (3041)*. In case of discolouration, stubborn stains or to remove a superficial scratch, we advise to sand the entire surface first. Make sure the surface is clean and dry before applying the *Hardwax Oil*. Spread the product evenly over the surface and remove excess product to avoid spots after drying.

### VARNISHED

Our varnished oak furniture is finished with a pigmented varnish. This finish gives the furniture its desired natural colour and offers a good protection against stains, even though with this extensive treatment, spills should be removed immediately.

### REGULAR CARE

For regular dusting, use a dry cloth. For cleaning or in case of a spill, use a damp cloth and natural soap. Wipe in the direction of the grain. Do not use soap containing detergent or other chemicals. Dry with a soft clean cloth to prevent spotting.

## *Teak furniture*

### NATURAL

Our natural teak range comes without any finish or protective treatment. The wood is merely polished, allowing the natural oils to rise to the surface. The high density of teak wood has the advantage that stains do not penetrate the wood as easily. Even with these characteristics, spills should be removed immediately.

### PREVENTIVE TREATMENT

If you want to protect the wood from the start you can apply a protective coating. We recommend *Occulto Oil (9911)*. This will seal the pores of the timber and creates a natural protection. Stains and marks should still be removed immediately.

### REGULAR CARE

For regular dusting, use a dry cloth. For cleaning or in case of a spill, use a damp cloth and natural soap. Wipe in the direction of the grain. Do not use soap containing detergent or other chemicals. Dry with a soft clean cloth to prevent spotting.

### THOROUGH CARE

To remove stubborn stains or superficial scratches, extra fine sandpaper can be used. Make sure you always rub in the direction of the wood grain.

### VARNISHED

The finish on our varnished teak gives the furniture its desired colour and offers a good protection against stains, even though with this extensive treatment, spills should be removed immediately.

### REGULAR CARE

For regular dusting, use a dry cloth. For cleaning or in case of a spill, use a damp cloth and natural soap. Do not use soap containing detergent or other chemicals. Dry with a soft clean cloth to prevent spotting.

### VARNISHED & WAXED

The carved parts of our Tabwa collection are varnished and, to achieve its signature shine, a wax is applied. This finish gives the furniture its desired colour and offers a good protection against stains, even though with this extensive treatment, spills should be removed immediately.

### REGULAR CARE

For regular dusting, use a dry cloth. For cleaning or in case of a spill, use a damp cloth and natural soap. Do not use soap containing detergent or other chemicals. Dry with a soft clean cloth to prevent spotting.

### REFRESHING THE SURFACE

Dust the surface first. Apply dark brown liquid beeswax using a soft cloth or a furniture brush. Allow the beeswax to dry. Buff with a clean soft cloth and/or furniture brush. Repeat until desired level of shine is reached.

# HOW TO TAKE CARE OF OUR PRODUCTS

## *Walnut furniture*

### OILED

Our oiled walnut furniture is finished with a tinted natural oil. This finish gives the furniture its desired natural colour and forms a natural protective coating that acts as a repellent against most substances and liquids. This is no foolproof guarantee against stains. In case of a spill, remove it immediately.

### REGULAR CARE

For regular dusting, use a dry cloth. For cleaning or in case of a spill, use a damp cloth and natural soap. Wipe in the direction of the grain. Do not use soap containing detergent or other chemicals. Dry with a soft clean cloth prevent spotting.

### REFRESHING THE SURFACE

To refresh your furniture or to remove superficial stains we recommend *Osmo Liquid Wax Cleaner (3029)*. This product cleans, regenerates the elegant character of the wood and slightly reinforces the original protective coating. *Osmo Liquid Wax Cleaner* is no guarantee against stains.

### THOROUGH CARE

As time goes by, the original hardwax coating may need to be renewed. We recommend using *Osmo Hardwax Oil for Walnut (5063)*. In case of discolouration, stubborn stains or to remove a superficial scratch, we advise to sand the entire surface first. Make sure the surface is clean and dry before applying the *Hardwax Oil*. Spread the product evenly and remove excess product to avoid spots after drying.

## *Upholstered furniture*

### FABRICS

Upholstered items should not be washed. Taking off the cushion covers and washing these in a machine (even at low temperature) will lighten the colour and shrink the fabric. If pilling should occur, don't be alarmed. It's a result of excess fibre coming off the fabric or from external sources. This is not a defect but a characteristic of many upholstered fabrics.

To keep upholstery in optimal condition we recommend the following:

- To remove pilling, we recommend using an antipilling machine.
- Avoid placing item in direct sunlight.
- For dusting or removing crumbs take a clean cloth or soft brush and wipe down upholstery. Do not rub.
- We do not recommend vacuuming. If you do so, use the lowest suction and a soft upholstery attachment.
- Treat spills immediately. Blot up as much of the spill as possible with a clean, dry, white cloth. Do not rub.
- In case of a stain, use a clean, slightly damp white cloth, blotting from the outer edge to the centre of the stain.
- Do not use any chemical products on your upholstery.
- If in doubt, always refer to the care label specific to your item.

### LEATHER

The upholstery of our leather chairs and sofas should not be washed or dry-cleaned.

To keep the leather in optimal condition we recommend the following:

- To avoid discolouration do not place the sofa in direct sunlight.
- Frequently wipe the leather sofa down with a clean, dry cloth.
- Treat spills immediately. Blot up as much of the spill as possible with a clean, dry, white cloth. Don't rub.
- In case of a stain, use a clean, slightly damp white cloth, blotting from the outer edge to the centre of the stain. Do not use any chemical products not designed for leather.
- Use a towel to evenly dry the leather. Do not use a hairdryer for this purpose as it is likely to dehydrate the leather.
- Apply leather conditioner when the leather feels dry.

## *Marble furniture*

Marble is a natural product, so it needs to be treated with care. Your Ethnicraft marble furniture is finished with an oil protection. This is a transparent layer that does not affect the look of the polished marble. However, it is important to know that direct contact with abrasive/high acidity products, even natural (lemons, wine, ...), should be avoided. We strongly recommend the use of coasters to prevent cold glasses and bottles from leaving marks on the furniture. Due to the porous nature of marble, remove spills immediately as this could cause permanent stains.

### REGULAR CARE

For regular dusting, use a dry cloth. For cleaning or in case of a spill, use a damp cloth and natural soap. Do not use soap containing detergent or other chemicals. Dry with a soft clean cloth to prevent spotting.

## *Bathroom*

Our bathroom furniture has been finished with products that fulfil the requirements for use within a humid area.

Furthermore, we advise the following:

- Install your furniture at a minimum distance of 60 cm/ 24" from your bath or shower.
- Ensure good ventilation and dry off wet surfaces after every use.
- Wooden elements should be cleaned using a damp cloth and natural soap. Wipe in the direction of the grain. Avoid using soap containing detergent or other chemicals.
- Washbasins and mirrors should be cleaned with non-abrasive products.
- Avoid the use of water warmer than 60°C/140°F in the wash basins to prevent a thermal shock.

## *Metal structures*

We advise the following:

- Dust regularly using a soft dry cloth.
- For a more thorough cleaning, use mild soap and warm water. Rinse with clean water and wipe dry.
- Do not use steel wool, sandpaper, mineral acid, bleach or chlorine cleaners on metal surfaces.
- Do not drag the furniture along the floor, as it might damage the protective coating, cause rusting or leave permanent marks on the floor.
- Always lift the furniture when moving them from place to place.

### TEXTURED TABLE TOPS

The Luna and Celeste tables are varnished with a water-based finish to repel common substances and fluids such as coffee, tea and wine. However, this protective coat is no foolproof guarantee against stains. In case of a spill, remove it immediately.

- Always use coasters to prevent hot surface from leaving marks on the table top.
- For regular dusting, use a dry cloth. For a more thorough cleaning, use a damp cloth and natural detergents.

# HOW TO TAKE CARE OF OUR PRODUCTS

## *Outdoor furniture*

Ethnicraft's outdoor collection is designed to adapt well to a range of environmental conditions, whether that be on an urban terrace or beachfront patio; warm and tropical or cool and mountainous. As the furniture adapts to its environment, it is normal for some cracking and movement to occur.

The beauty of teak is that, even when left in its natural state, outdoors and in any season, it is basically maintenance-free. Our teak range comes without any finish or protective treatment. The wood is merely polished, allowing the natural oils to rise to the surface. The high density of teak wood means it is an excellent choice for outdoor use.

Overtime, it is natural for untreated furniture to grey slightly due to prolonged sun and rain exposure. This colour change is purely superficial and does not impact the strength or quality of the timber.

*Due to the handcrafted nature of our products, each item will vary slightly. We consider this a sign of uniqueness and quality.*

### REGULAR CARE

Teak's high density has the advantage that stains do not penetrate the wood as easily. Even with these characteristics, any spills should be removed immediately.

Use placemats and/or coasters to prevent hot pots and pans, or cold glasses and bottles, from leaving marks on the furniture.

For regular wiping, use a dry cloth or soft brush for dusting off crumbs and leaves – do not rub. For cleaning, or in case of a spill, use a damp cloth and natural soap. Wipe in the direction of the grain. Do not use soap containing detergent or other chemicals. Dry with a soft clean cloth to prevent spotting.

With teak's natural oils rising to the surface, it can appear as irregular colouring or appear like a watermark. This is not a flaw, but a natural part of the timber's maturing. Use a damp cloth and natural soap to clean.

After any cleaning, ensure that furniture is dried thoroughly as spores that result in mould growth thrive in prolonged damp and dirty conditions.

Avoid letting water rest on any furniture surfaces for periods of time as permanent water damage can occur on wood, fabric or metal.

All teak items are equipped with glides to prevent water absorption from the ground. As well as preserving the furniture's feet, glides protect ground surfaces from scratches. Important! To prevent warping, before using a sofa with 5 or 6 legs, always adapt the adjustable glides of the middle legs to the ground surface. For stability, middle legs need to be slightly shorter.

Always ensure solutions used to clean paving, patios or terraces do not come into contact with the furniture, as it might leave permanent marks on surfaces. Some wood species contain tannin, which causes the wood to react with metal and leave permanent stains.

Avoid close exposure to heating sources such as outdoor fires, braziers and heaters.

### THOROUGH CARE

To keep your Ethnicraft outdoor furniture in optimal condition we suggest fitting a custom rain cover during seasons where it is not in use or periods of bad weather.

Ensure the furniture is thoroughly clean and dry before applying the cover protection. For long periods of time we recommend that, if possible, any soft furnishings, cushions etc should be removed and stored indoors.

To remove stubborn stains or superficial scratches to teak surfaces, extra fine sandpaper can be gently used. Always sand in the direction of the wood grain.

### RAIN COVERS

Custom-made to fit your Ethnicraft outdoor furniture and upholstery, our rain covers provide excellent protection against water, wind and frost. Protecting against dust, dirt, UV and harsh weather conditions, covers are breathable to prevent mould and mildew growth. Covers feature metal eyelets for fastening against high winds.

Produced in Europe and handmade using a PU-coated textile specifically developed to protect quality wooden furniture, providing a gentle shield to the surface it rests on. Covers are durable and lightweight to ensure easy fitting.

Before fitting, ensure furniture has been cleaned off and dry. Ensure any dirt or leaves have been dusted off surfaces to reduce the chance of mould growth. Any residue trapped on surfaces can cause mould.

Covers are easy care, machine washable up to 30°C/86°F, and fold down easily for storing. Air dry only, ensure cover is completely dry before storing.

For ongoing care, we recommend cleaning any debris off the cover regularly with a cloth, brush or hose

## *Outdoor upholstery & fabrics*

Woven in Belgium, Ethnicraft outdoor fabrics are 100% polypropylene, a synthetic material. Polypropylene by its nature is water-repellent, stain-resistant, as well as resistant to mould, moths and bacteria like no other synthetic or natural fibre.

It is also:

- UV resistant.
- Resistant to the action of acids and alkalis.
- Hypoallergenic, with anti-odorant properties.
- Resistant to humidity and, although not completely waterproof, it does not absorb water and is quick-drying.
- Maintenance friendly - easily cleaned with clear water and a natural soap. Covers are machine washable up to 40°C/104°F. Do not use any chemical products not designed for polyester.
- 100% recyclable.

### CUSHIONS

All sit cushions are equipped with an anti-slip fabric on the bottom to ensure cushions remain in the correct position.

The naturally occurring surface oil in teak can cause stains on cushions. To clean, use a damp white cloth, natural soap and clear water. Please note, natural oil transfer from wood to fabric is a recurring process that cannot be prevented.

All cushions are inserted with a long lasting, quick dry foam. This dries quickly after exposure to rain, ocean spray, melting snow, morning dew, or moisture and humidity which can penetrate even a "water repellent" outer shell over a period of time.





# OUR COMMITMENT

Wood has always been the core material in the Ethnicraft range. We are deeply aware of the impact of our industry on the environment and we take environmental issues to heart: the origin of the wood, the energy we use in the production and distribution process, the treatment of the products and waste reduction – we try to be as environmentally friendly as possible.

In a world where trends change from one year to the next, we want to create design that will last for generations. Our timeless designs associate well with different styles, while our solid wood is strong and ages incredibly well with time. The ultimate noble and renewable material, all of our wood is sourced from responsibly and carefully managed forests.

### NO WASTE

Production waste such as leftover logs, wood and sawdust are re-used for other purposes. The sawdust from logs is either used as fuel for the drying ovens or compressed as a base for pellets. All the leftovers from cutting planks to size are recycled and used as base material or as box joints for panels.

### FSC® LABEL FOR OUR FURNITURE

Our commitment to the environment is reflected by the FSC® CoC (Chain of Custody) certification of our distribution centres. The FSC® label guarantees products come from forests that are managed so that they meet the social, economic, and ecological needs of present and future generations. In the case of Ethnicraft NV and Azur, the CoC certificate guarantees that the company is perfectly placed to buy, stock and sell products with a specified FSC® certificate, originating from sustainably managed forests, controlled sources and reclaimed materials, or a mixture of these.

*The ultimate noble and renewable material, our wood is sourced from responsibly and carefully managed forests.*

### QUALITY CONTROL AND TESTING

Producing furniture and accessories at the highest quality, strength and safety is extremely important to us. To ensure this, we test all our products throughout the entire development process. We test on factors such as stability, durability, and safety for domestic use, to a level that meets or exceeds the highest furniture standards within the industry. Our internal protocols are based on the standards set by ANSI (American National Standards Institute) and BIFMA (North American Business and Institutional Furniture Manufacturers Association). Moreover, specific products within our collections are certified by independent external facilities in order to meet the European requirements for contract-grade use, along with specific requirements based around ecological and health regulations such as toxic substance use and flammability. Details on our testing can be found on our website and within our catalogues.

### TEXTILE SOURCING AND SUSTAINABILITY

Our cushion covers, throws and rugs are crafted from the best weaving yarns which are primarily produced in Belgium, France, Italy, and Peru and Pakistan. By consciously choosing natural fibres – such as cotton, wool, and Belgian linen – we stay true to our values: design pieces full of character, made from quality materials that age beautifully.

Cushion inners are made in The Netherlands and are Oeko-Tex 100 certified. The Oeko-Tex label is an international standard that guarantees no harmful substances are contained within the final product. It certifies both natural and synthetic fibres. For the filling of our cushions, we have consciously opted for duck feather. As a natural product, duck feather far surpasses synthetic alternatives in terms of durability and sustainability. All cushion fillers carry the Downpass certification to guarantee high quality, ethical sourcing, and traceable supply chains.





# CREDITS

## **LIFESTYLE PHOTOGRAPHY**

Nicolas Schimp  
Diane Hendrixx

## **PRODUCT PHOTOGRAPHY**

Diane Hendrixx  
Thomas Ost

## **GRAPHICS & STYLING**

Cécile Grosjean  
Els Van Roey  
Nancy Reijnders

©2021 Ethnicraft

# Ethnicraft

## RETAIL

### **Ethnicraft Belgium**

Headquarters  
Scheldeweg 5  
2850 Boom  
+ 32 3 443 01 00  
info@ethnicraft.com

### **Ethnicraft France, Italy, Spain & Portugal**

189, Rue Gabriel Lippmann CS90009  
13131 Berre l'Etang CEDEX  
+ 33 442 152 152  
azur@ethnicraft.com

### **Ethnicraft Asia**

info@ethnicraft-asia.com

### **Ethnicraft USA**

High Point, North Carolina  
+ 1 336 821 1385  
info@ethnicraft-usa.com

## OFFICE, CONTRACT, HOSPITALITY & PROJECTS

### **Ethnicraft Europe, Middle East & Africa**

+ 32 3 443 01 72  
contract@ethnicraft.com

### **Ethnicraft France, Italy, Spain & Portugal**

+ 33 442 152 154  
contract@ethnicraft.fr

### **Ethnicraft Asia - Pacific**

+66 631 685 658  
contract@ethnicraft-asia.com

### **Ethnicraft Americas**

+ 1 917 513 0069  
contract@ethnicraft-usa.com

## ONLINE

ethnicraft.com

